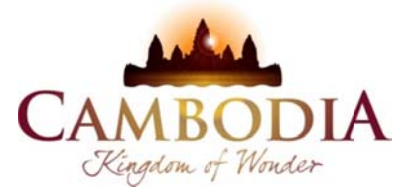




KINGDOM OF CAMBODIA
NATION RELIGION KING



TOURISM STATISTICS REPORT

June 2012

MINISTRY OF TOURISM

Statistics and Tourism Information Department

No. A3, Street 169, Sangkat Veal Vong, Khan 7 Makara, Phnom Penh, Cambodia.

Fax: +855 23 885003

E-mail: kong@mot.gov.kh

Web site: www.mot.gov.kh

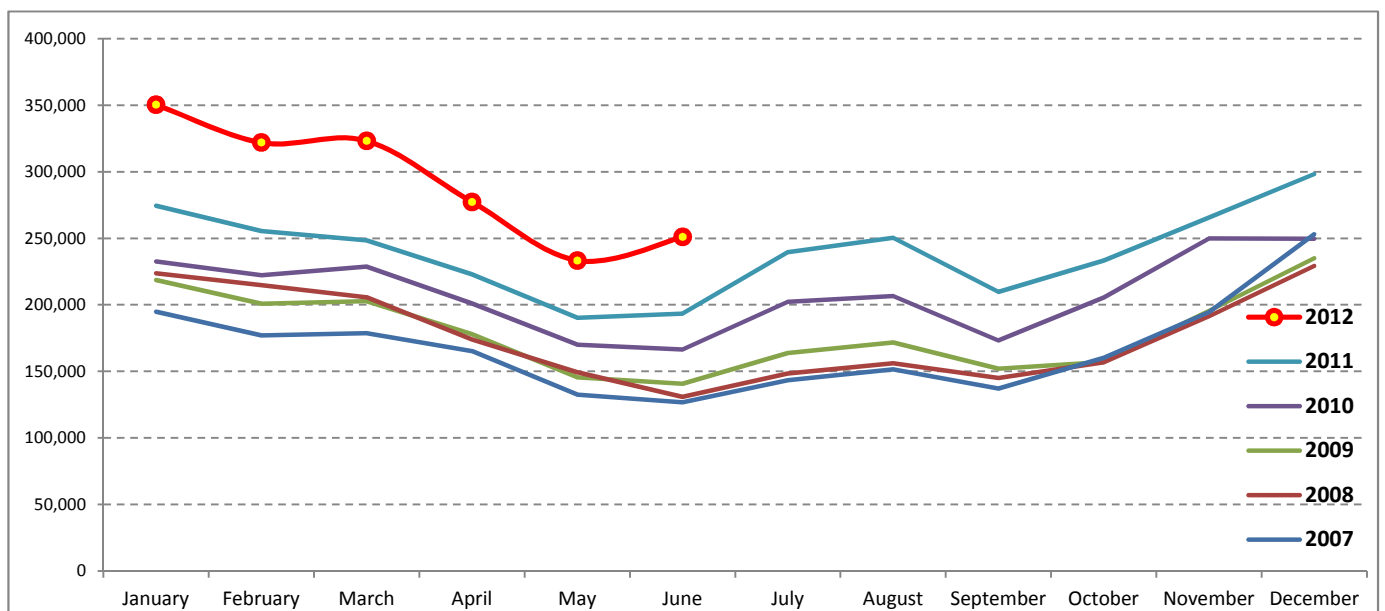
Tourism Highlights

International Tourist Arrivals, Average Length of Stay, Hotels Occupancy & Tourism Receipts 1993 - 2011

Years	Tourist Arrivals		Average Length	Hotels Occupancy	Tourism Receipts
	number	change (%)	of Stay (days)	(%)	(Million US\$)
1993	118,183	-	N/A	N/A	N/A
1994	176,617	49.4	N/A	N/A	N/A
1995	219,680	24.4	8.00	37.00	100
1996	260,489	18.6	7.50	40.00	118
1997	218,843	-16.0	6.40	30.00	103
1998	286,524	30.9	5.20	40.00	166
1999	367,743	28.3	5.50	44.00	190
2000	466,365	26.8	5.50	45.00	228
2001	604,919	29.7	5.50	48.00	304
2002	786,524	30.0	5.80	50.00	379
2003	701,014	-10.9	5.50	50.00	347
2004	1,055,202	50.5	6.30	52.00	578
2005	1,421,615	34.7	6.30	52.00	832
2006	1,700,041	19.6	6.50	54.79	1,049
2007	2,015,128	18.5	6.50	54.79	1,400
2008	2,125,465	5.5	6.65	62.68	1,595
2009	2,161,577	1.7	6.45	63.57	1,561
2010	2,508,289	16.0	6.45	65.74	1,786
2011	2,881,862	14.9	6.50	66.15	1,912

International tourist arrivals to Cambodia

Destination	Months	2007	2008	2009	2010	2011	2012	change (%) 2012*/11
Cambodia	Q1	550,813	644,205	622,288	683,692	778,467	995,210	27.8
<i>International tourist arrivals by all means of transportations</i>	January	194,932	223,581	218,691	232,590	274,471	350,257	27.6
	February	177,130	214,902	200,789	222,354	255,499	321,870	26.0
	March	178,751	205,722	202,808	228,748	248,497	323,083	30.0
	Q2	424,536	454,031	464,230	537,464	606,562	761,442	25.5
	April	165,347	173,903	177,955	200,965	223,032	277,304	24.3
	May	132,512	149,275	145,564	170,164	190,258	233,220	22.6
	June	126,677	130,853	140,711	166,335	193,272	250,918	29.8
	Q3	431,815	449,693	487,422	582,024	699,760	0	
	July	143,310	148,449	163,817	202,349	239,527		
	August	151,478	156,098	171,668	206,563	250,429		
	September	137,027	145,146	151,937	173,112	209,804		
	Q4	607,964	577,536	587,637	705,109	797,073	0	
	October	160,235	156,718	157,105	205,515	233,190		
	November	194,646	191,549	195,570	249,892	265,539		
	December	253,083	229,269	234,962	249,702	298,344		
	Total	2,015,128	2,125,465	2,161,577	2,508,289	2,881,862	1,756,652	26.8



Source: Statistics and Tourism Information Department, MOT

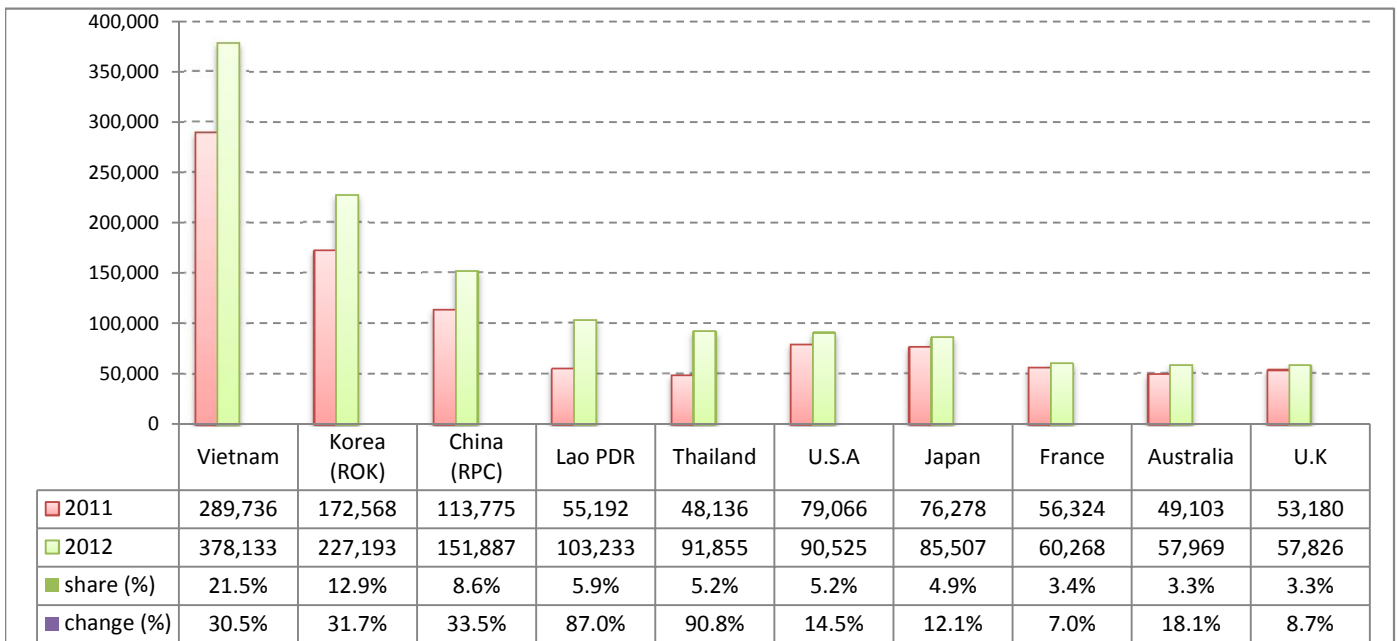
Executive Summary Report in the First Semester of 2012

I. International tourist arrivals to Cambodia in January - June 2012 was: **1,756,652**

II. Mode of arrivals

	visitors	share (%)
Air	850,879	48.4
Phnom Penh Int'l Airport	343,286	19.5
Siem Reap Int'l Airport	507,593	28.9
Land and Water ways	905,773	51.6
Land	859,900	49.0
Waterway	45,873	2.6
Total	1,756,652	100.0

III. Top ten markets arrivals in January - June 2012



IV. International tourist arrivals to Cambodia in January - June 2012

	Inbound tourism		share (%)		change (%)
	2011	2012	2011	2012	2012*/11
Air	714,373	850,879	51.6	48.4	19.1
Phnom Penh Int'l Airport	310,464	343,286	22.4	19.5	10.6
Siem Reap Int'l Airport	403,909	507,593	29.2	28.9	25.7
Land and Water ways	670,656	905,773	48.4	51.6	35.1
Land	629,537	859,900	45.5	49.0	36.6
Waterway	41,119	45,873	3.0	2.6	11.6
Total	1,385,029	1,756,652	100.0	100.0	26.8

V. Remark: Percentage share of international tourist arrivals at destinations in January - June 2012

	Arrivals		share (%)		change (%)
	2011	2012	2011	2012	2012*/11
Phnom Penh & Other Destinations	600,520	697,995	43.4	39.7	16.2
Siem Reap Province	784,509	1,058,657	56.6	60.3	34.9
Total	1,385,029	1,756,652	100.0	100.0	26.8

VI. Outbound tourists departures in January - June 2012

	Outbound tourism		change (%)
	2011	2012	2012*/11
Cambodian outbound tourists	293,033	388,947	32.7
International outbound tourists	1,379,021	1,755,028	27.3

International Tourist Arrivals to Cambodia by Country of Residence in January - June 2012

(by all mean of transportations)

Regions Country of Residence	2011		2012			share		change	
			Purpose of Visit			Total	Female	(%)	(%)
			Holiday	Business	Other			2012*	2012*/11
GRAND TOTAL	1,385,029	1,615,682	78,701	62,269	1,756,652	793,608	100.0	26.8	
Asia and the Pacific	991,954	1,215,451	62,074	32,667	1,310,192	603,566	74.6	32.1	
ASEAN	504,201	675,593	16,490	20,297	712,380	329,027	40.6	41.3	
Brunei Darussalam	231	393	7	83	483	184	0.0	109.1	
Indonesia	7,217	8,259	1,138	212	9,609	3,163	0.5	33.1	
Lao PDR	55,192	102,913	41	279	103,233	70,698	5.9	87.0	
Malaysia	48,362	50,173	3,159	390	53,722	18,964	3.1	11.1	
Myanmar	2,230	2,130	315	94	2,539	1,072	0.1	13.9	
Philippines	30,932	44,780	3,188	554	48,522	28,954	2.8	56.9	
Singapore	22,165	23,152	971	161	24,284	8,705	1.4	9.6	
Thailand	48,136	82,930	4,305	4,620	91,855	42,822	5.2	90.8	
Vietnam	289,736	360,863	3,366	13,904	378,133	154,465	21.5	30.5	
Eastern Asia	416,169	469,866	40,347	5,058	515,271	240,802	29.3	23.8	
China (RPC)	113,775	126,775	23,705	1,407	151,887	68,602	8.6	33.5	
Hong Kong SAR	2,777	3,962	135	39	4,136	2,019	0.2	48.9	
Japan	76,278	80,382	3,852	1,273	85,507	37,382	4.9	12.1	
Korea (ROK)	172,568	218,441	7,254	1,498	227,193	112,826	12.9	31.7	
Mongolia	137	168	12	25	205	98	0.0	49.6	
Taiwan, China	50,634	40,138	5,389	816	46,343	19,875	2.6	-8.5	
Southern Asia	9,304	9,669	1,545	501	11,715	3,221	0.7	25.9	
Afghanistan	74	49	6	15	70	9	0.0	-5.4	
Bangladesh	612	417	105	70	592	75	0.0	-3.3	
Bhutan	39	71	0	13	84	13	0.0	115.4	
India	7,019	7,610	1,018	262	8,890	2,672	0.5	26.7	
Nepal	524	615	73	49	737	193	0.0	40.6	
Pakistan	541	411	181	39	631	105	0.0	16.6	
Srilanka	495	496	162	53	711	154	0.0	43.6	
Western Asia	1,155	1,216	88	9	1,313	715	0.1	13.7	
Kazakhstan	762	939	66	8	1,013	517	0.1	32.9	
Uzbekistan	393	277	22	1	300	198	0.0	-23.7	
Oceania	56,731	57,060	3,148	6,444	66,652	28,761	3.8	17.5	
Australia	49,103	49,723	2,633	5,613	57,969	25,296	3.3	18.1	
Fiji	71	38	7	2	47	11	0.0	-33.8	
New Zealand	7,557	7,299	508	829	8,636	3,454	0.5	14.3	
Other Asia & the Pacific	4,394	2,047	456	358	2,861	1,040	0.2	-34.9	
Europe	272,406	286,640	10,408	11,268	308,316	131,326	17.6	13.2	
Northern Europe	79,550	80,781	3,275	1,332	85,388	32,531	4.9	7.3	
Denmark	5,207	5,109	143	76	5,328	2,140	0.3	2.3	
Finland	3,811	3,436	153	100	3,689	1,357	0.2	-3.2	
Iceland	196	279	4	2	285	111	0.0	45.4	
Ireland	3,766	3,888	188	73	4,149	1,545	0.2	10.2	
Norway	4,760	4,617	111	79	4,807	1,975	0.3	1.0	
Sweden	8,630	8,933	239	132	9,304	3,547	0.5	7.8	
United Kingdom	53,180	54,519	2,437	870	57,826	21,856	3.3	8.7	
Western Europe	120,758	116,275	5,138	9,019	130,432	54,152	7.4	8.0	
Austria	3,984	4,205	105	159	4,469	1,748	0.3	12.2	
Belgium	6,390	6,285	286	319	6,890	2,675	0.4	7.8	
France	56,324	49,856	3,172	7,240	60,268	25,519	3.4	7.0	
Germany	34,399	36,155	841	674	37,670	15,134	2.1	9.5	
Luxembourg	258	206	5	6	217	87	0.0	-15.9	
Monaco	38	24	0	0	24	13	0.0	-36.8	
Netherlands	10,557	10,734	367	214	11,315	4,484	0.6	7.2	
Switzerland	8,808	8,810	362	407	9,579	4,492	0.5	8.8	
Eastern Europe	48,168	65,236	800	189	66,225	34,002	3.8	37.5	
Bulgaria	223	314	6	0	320	176	0.0	43.5	
Czech Republic	1,790	2,268	39	14	2,321	969	0.1	29.7	
Estonia	565	465	9	7	481	207	0.0	-14.9	
Hungary	1,620	1,374	26	13	1,413	602	0.1	-12.8	
Lithuania	910	604	16	6	626	323	0.0	-31.2	
Poland	4,424	4,815	33	28	4,876	2,381	0.3	10.2	
Romania	547	559	26	6	591	320	0.0	8.0	
Russian Federation	35,297	51,528	541	90	52,159	27,376	3.0	47.8	
Slovakia	691	812	47	19	878	348	0.0	27.1	
Ukraine	2,101	2,497	57	6	2,560	1,300	0.1	21.8	

International Tourist Arrivals to Cambodia by Country of Residence in January - June 2012

(by all mean of transportations)

Regions Country of Residence	2011		2012			share		change	
			Purpose of Visit			Total	Female	(%)	(%)
			Holiday	Business	Other			2012*	2012*/11
GRAND TOTAL	1,385,029	1,615,682	78,701	62,269	1,756,652	793,608	100.0	26.8	
Southern Europe	19,976	22,581	656	394	23,631	9,536	1.3	18.3	
Croatia	241	325	10	3	338	166	0.0	40.2	
Greece	615	458	9	10	477	154	0.0	-22.4	
Italy	9,702	9,733	317	141	10,191	3,715	0.6	5.0	
Portugal	1,271	1,183	34	16	1,233	535	0.1	-3.0	
Serbia	220	170	16	2	188	84	0.0	-14.5	
Slovenia	392	513	15	2	530	218	0.0	35.2	
Spain	6,002	8,822	169	161	9,152	4,272	0.5	52.5	
Turkey	1,533	1,377	86	59	1,522	392	0.1	-0.7	
Other Europe	3,954	1,767	539	334	2,640	1,105	0.2	-33.2	
Americas	113,134	106,021	5,760	18,146	129,927	55,767	7.4	14.8	
Argentina	1,937	2,929	18	66	3,013	1,460	0.2	55.5	
Brazil	1,867	2,724	27	29	2,780	1,342	0.2	48.9	
Canada	23,346	23,394	1,020	2,308	26,722	11,623	1.5	14.5	
Chile	1,387	1,687	47	8	1,742	861	0.1	25.6	
Colombia	1,395	695	12	22	729	357	0.0	-47.7	
Costa Rica	121	136	3	2	141	75	0.0	16.5	
Ecuador	83	51	0	8	59	31	0.0	-28.9	
Mexico	1,507	1,822	30	23	1,875	928	0.1	24.4	
Peru	242	266	10	3	279	112	0.0	15.3	
United States	79,066	70,717	4,361	15,447	90,525	38,075	5.2	14.5	
Uruguay	398	361	0	16	377	199	0.0	-5.3	
Other Americas	1,785	1,239	232	214	1,685	704	0.1	-5.6	
Africa	2,968	2,115	281	109	2,505	972	0.1	-15.6	
Cameroon	230	105	2	5	112	26	0.0	-51.3	
Congo	97	30	0	5	35	7	0.0	-63.9	
Ghana	250	83	7	4	94	9	0.0	-62.4	
Kenya	141	90	11	18	119	48	0.0	-15.6	
Liberia	255	64	1	0	65	17	0.0	-74.5	
Nigeria	270	144	121	17	282	44	0.0	4.4	
Sudan	12	18	3	2	23	5	0.0	91.7	
South Africa	1,346	1,416	99	20	1,535	727	0.1	14.0	
Uganda	172	23	3	7	33	13	0.0	-80.8	
Other Africa	195	142	34	31	207	76	0.0	6.2	
Middle East	4,567	5,455	178	79	5,712	1,977	0.3	25.1	
Egypt	74	73	6	11	90	20	0.0	21.6	
Iran	365	324	3	11	338	91	0.0	-7.4	
Iraq	46	46	2	3	51	9	0.0	10.9	
Israel	3,401	4,220	129	25	4,374	1,744	0.2	28.6	
Kuwait	257	348	0	1	349	13	0.0	35.8	
Oman	59	70	0	4	74	6	0.0	25.4	
Palestine	18	14	0	0	14	2	0.0	-22.2	
Qatar	44	47	0	0	47	23	0.0	6.8	
Saudi Arabia	30	40	3	2	45	6	0.0	50.0	
United Arab Emirates	74	116	0	0	116	5	0.0	56.8	
Yemen	63	42	2	2	46	7	0.0	-27.0	
Other Middle East	136	115	33	20	168	51	0.0	23.5	

Remark:

- Cambodian outbound tourist departures: 388,947
 - International outbound tourist departures: 1,755,028

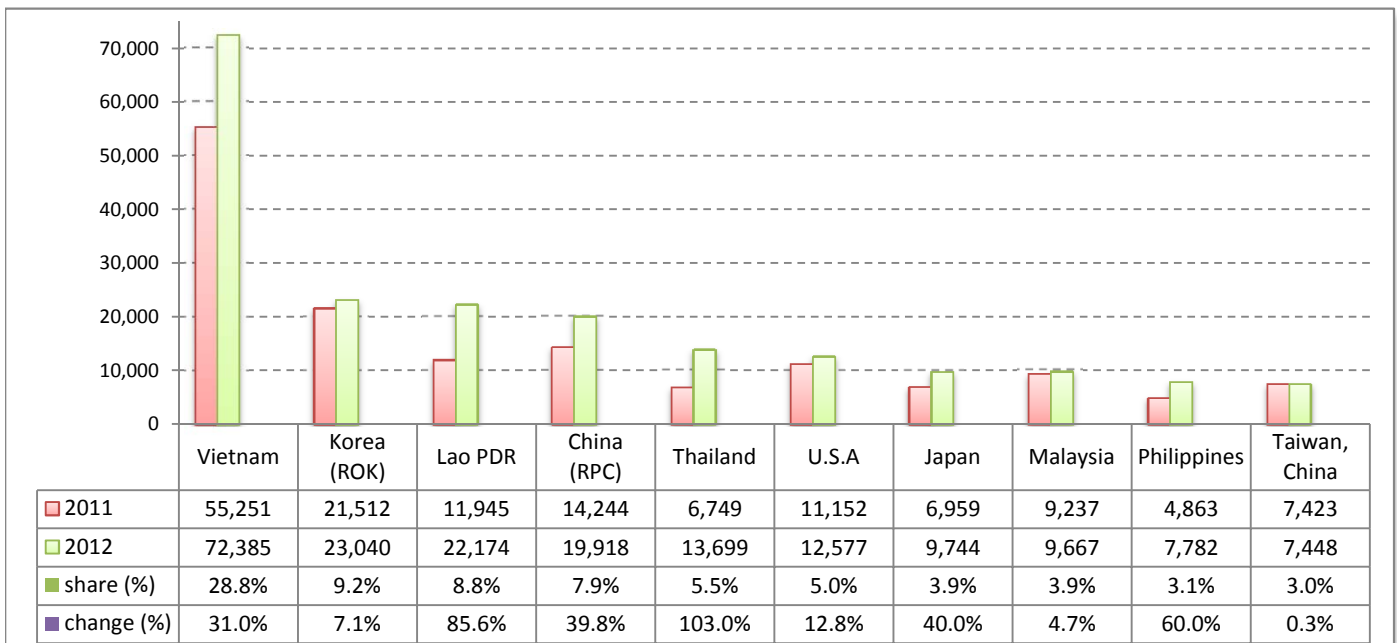
Executive Summary Report in June 2012

I. International tourist arrivals to Cambodia in June 2012 was: **250,918**

II. Mode of arrivals

	visitors	share (%)
Air	106,443	42.4
Phnom Penh Int'l Airport	54,359	21.7
Siem Reap Int'l Airport	52,084	20.8
Land and Water ways	144,475	57.6
Land	140,518	56.0
Waterway	3,957	1.6
Total	250,918	100.0

III. Top ten markets arrivals in June 2012



IV. International tourist arrivals to Cambodia in June 2012

	Inbound tourism		share (%)		change (%)
	2011	2012	2011	2012	2012*/11
Air	90,010	106,443	46.6	42.4	18.3
Phnom Penh Int'l Airport	45,554	54,359	23.6	21.7	19.3
Siem Reap Int'l Airport	44,456	52,084	23.0	20.8	17.2
Land and Water ways	103,262	144,475	53.4	57.6	39.9
Land	99,390	140,518	51.4	56.0	41.4
Waterway	3,872	3,957	2.0	1.6	2.2
Total	193,272	250,918	100.0	100.0	29.8

V. Remark: Percentage share of international tourist arrivals at destinations in June 2012

	Arrivals		share (%)		change (%)
	2011	2012	2011	2012	2012*/11
Phnom Penh & Other Destinations	89,841	133,712	46.5	53.3	48.8
Siem Reap Province	103,431	117,206	53.5	46.7	13.3
Total	193,272	250,918	100.0	100.0	29.8

VI. Outbound tourists departures in June 2012

	Outbound tourism		change (%)
	2011	2012	2012*/11
Cambodian outbound tourists	50,671	66,070	30.4
International outbound tourists	188,863	246,741	30.6

International Tourist Arrivals to Cambodia by Country of Residence in June 2012

(by all mean of transportations)

Regions Country of Residence	2011	2012			Total	Female	share	change
		Purpose of Visit					(%)	(%)
	Holiday	Business	Other	2012*	2012*/11			
GRAND TOTAL	193,272	228,718	12,637	9,563	250,918	101,862	100.0	29.8
Asia and the Pacific	154,731	193,085	10,010	3,967	207,062	85,108	82.5	33.8
ASEAN (South-East Asia)	94,579	128,302	2,551	2,179	133,032	54,098	53.0	40.7
Brunei Darussalam	51	99	2	2	103	33	0.0	102.0
Indonesia	1,092	1,588	232	14	1,834	565	0.7	67.9
Lao PDR	11,945	22,128	11	35	22,174	14,795	8.8	85.6
Malaysia	9,237	9,150	436	81	9,667	3,373	3.9	4.7
Myanmar	209	329	42	5	376	125	0.1	79.9
Philippines	4,863	7,244	462	76	7,782	4,420	3.1	60.0
Singapore	5,182	4,824	161	27	5,012	1,891	2.0	-3.3
Thailand	6,749	12,216	650	833	13,699	5,362	5.5	103.0
Vietnam	55,251	70,724	555	1,106	72,385	23,534	28.8	31.0
North-East Asia	50,685	53,622	6,583	667	60,872	25,773	24.3	20.1
China (RPC)	14,244	16,111	3,645	162	19,918	8,242	7.9	39.8
Hong Kong SAR	530	631	38	18	687	322	0.3	29.6
Japan	6,959	8,826	738	180	9,744	3,833	3.9	40.0
Korea (ROK)	21,512	21,556	1,262	222	23,040	10,534	9.2	7.1
Mongolia	17	27	3	5	35	10	0.0	105.9
Taiwan, China	7,423	6,471	897	80	7,448	2,832	3.0	0.3
Southern Asia	1,363	1,623	307	90	2,020	533	0.8	48.2
Afghanistan	2	4	2	0	6	0	0.0	200.0
Bangladesh	88	86	24	21	131	12	0.1	48.9
Bhutan	3	14	0	2	16	4	0.0	433.3
India	1,022	1,272	205	29	1,506	446	0.6	47.4
Nepal	76	77	10	3	90	20	0.0	18.4
Pakistan	85	54	29	6	89	15	0.0	4.7
Srilanka	87	116	37	29	182	36	0.1	109.2
Western Asia	134	114	17	4	135	67	0.1	0.7
Kazakhstan	56	76	15	4	95	44	0.0	69.6
Uzbekistan	78	38	2	0	40	23	0.0	-48.7
Oceania	7,754	9,189	534	997	10,720	4,512	4.3	38.3
Australia	6,530	8,076	454	872	9,402	4,025	3.7	44.0
Fiji	9	6	1	0	7	2	0.0	-22.2
New Zealand	1,215	1,107	79	125	1,311	485	0.5	7.9
Other Asia & the Pacific	216	235	18	30	283	125	0.1	31.0
Europe	23,123	22,495	1,608	2,371	26,474	9,995	10.6	14.5
Northern Europe	8,356	8,159	480	261	8,900	3,138	3.5	6.5
Denmark	456	410	12	15	437	161	0.2	-4.2
Finland	233	360	38	10	408	158	0.2	75.1
Iceland	17	80	1	1	82	36	0.0	382.4
Ireland	606	612	20	6	638	237	0.3	5.3
Norway	362	390	13	30	433	186	0.2	19.6
Sweden	510	439	26	18	483	132	0.2	-5.3
United Kingdom	6,172	5,868	370	181	6,419	2,228	2.6	4.0
Western Europe	9,900	8,026	855	1,983	10,864	3,776	4.3	9.7
Austria	214	182	17	35	234	70	0.1	9.3
Belgium	566	512	38	91	641	202	0.3	13.3
France	5,465	3,501	579	1,616	5,696	2,077	2.3	4.2
Germany	2,058	2,087	108	123	2,318	754	0.9	12.6
Luxembourg	15	16	1	1	18	4	0.0	20.0
Monaco	13	3	0	0	3	1	0.0	-76.9
Netherlands	1,001	1,091	55	35	1,181	407	0.5	18.0
Switzerland	568	634	57	82	773	261	0.3	36.1
Central / Eastern Europe	2,851	4,031	141	30	4,202	2,155	1.7	47.4
Bulgaria	14	12	0	0	12	5	0.0	-14.3
Czech Republic	81	95	4	1	100	40	0.0	23.5
Estonia	17	19	1	2	22	2	0.0	29.4
Hungary	82	66	5	4	75	36	0.0	-8.5
Lithuania	13	66	5	5	76	23	0.0	484.6
Poland	248	300	7	2	309	150	0.1	24.6
Romania	84	37	5	1	43	19	0.0	-48.8
Russian Federation	2,082	3,251	94	11	3,356	1,774	1.3	61.2
Slovakia	48	44	8	3	55	22	0.0	14.6
Ukraine	182	141	12	1	154	84	0.1	-15.4

International Tourist Arrivals to Cambodia by Country of Residence in June 2012

(by all mean of transportations)

Regions Country of Residence	2011	2012			Total	Female	share	change
		Purpose of Visit					(%)	(%)
		Holiday	Business	Other			2012*	2012*/11
GRAND TOTAL	193,272	228,718	12,637	9,563	250,918	101,862	100.0	29.8
Southern Europe	1,889	2,127	89	36	2,252	824	0.9	19.2
Croatia	12	24	2	2	28	10	0.0	133.3
Greece	34	27	3	1	31	9	0.0	-8.8
Italy	595	654	43	16	713	208	0.3	19.8
Portugal	141	112	4	1	117	45	0.0	-17.0
Serbia	17	11	1	0	12	4	0.0	-29.4
Slovenia	21	20	4	0	24	10	0.0	14.3
Spain	967	1,125	21	9	1,155	505	0.5	19.4
Turkey	102	154	11	7	172	33	0.1	68.6
Other Europe	127	152	43	61	256	102	0.1	101.6
Americas	14,451	12,323	957	3,192	16,472	6,534	6.6	14.0
Argentina	129	185	1	3	189	78	0.1	46.5
Brazil	195	203	6	2	211	100	0.1	8.2
Canada	2,348	2,014	148	357	2,519	1,020	1.0	7.3
Chile	115	162	2	3	167	72	0.1	45.2
Colombia	106	226	1	3	230	102	0.1	117.0
Costa Rica	4	13	0	0	13	6	0.0	225.0
Ecuador	14	9	0	0	9	4	0.0	-35.7
Mexico	237	316	5	3	324	163	0.1	36.7
Peru	24	37	1	0	38	19	0.0	58.3
United States	11,152	9,007	777	2,793	12,577	4,908	5.0	12.8
Uruguay	19	16	0	0	16	9	0.0	-15.8
Other Americas	108	135	16	28	179	53	0.1	65.7
Africa	461	301	38	16	355	133	0.1	-23.0
Cameroon	55	9	0	0	9	2	0.0	-83.6
Congo	28	1	0	0	1	0	0.0	-96.4
Ghana	29	10	0	2	12	1	0.0	-58.6
Kenya	27	21	2	3	26	7	0.0	-3.7
Liberia	38	11	0	0	11	8	0.0	-71.1
Nigeria	41	17	12	1	30	3	0.0	-26.8
Sudan	3	1	0	0	1	0	0.0	-66.7
South Africa	176	207	16	5	228	99	0.1	29.5
Uganda	37	2	1	0	3	1	0.0	-91.9
Other Africa	27	22	7	5	34	12	0.0	25.9
Middle East	506	514	24	17	555	92	0.2	9.7
Egypt	13	9	1	3	13	5	0.0	0.0
Iran	46	52	1	5	58	7	0.0	26.1
Iraq	25	12	0	2	14	1	0.0	-44.0
Israel	257	232	17	3	252	57	0.1	-1.9
Kuwait	86	135	0	0	135	4	0.1	57.0
Oman	14	26	0	0	26	3	0.0	85.7
Palestine	1	2	0	0	2	0	0.0	100.0
Qatar	3	3	0	0	3	1	0.0	0.0
Saudi Arabia	3	7	0	0	7	1	0.0	133.3
United Arab Emirates	27	15	0	0	15	2	0.0	-44.4
Yemen	13	6	0	0	6	3	0.0	-53.8
Other Middle East	18	15	5	4	24	8	0.0	33.3

Remark:

- Cambodian outbound tourist departures: 66,070
 - International outbound tourist departures: 246,741

COMPILED BY:

1. Mr. Kong Sopheareak

Director
Statistics & Tourism Information Department
Fax: +855 23 885003
E-mail: kong@mot.gov.kh

2. Mr. Horth Vanny

Chief of Tourism Statistics Office
Compile and data analysis
Tel.: +855 12 827664